

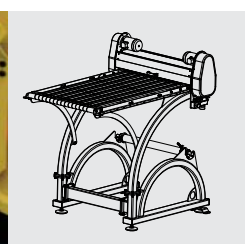
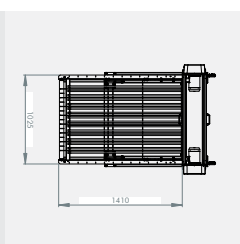
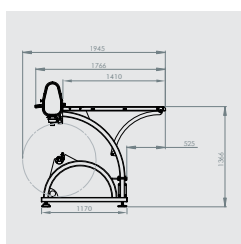
PAL-Cut | Innovationsbook



One machine...



...fits in everywhere





Customer: Aqua d'or, Brande (DK)
Business sector: Mineral water
Model: PAL-Cut 1200



PROBLEM:

Managing the sheets.



SOLUTION:

PAL-Cut 1200 was customised by our engineers with a dividing knife for 1/4 pallets. The roll was fitted on a separate carriage.

We achieved a total saving of:

54%

– with PAL-Cut® ...



Customer: Danisco, Grindsted (DK)
Business sector: Ingredients
Model: PAL-Cut 1200 (extra height model)



PROBLEM:

Managing the sheets.



SOLUTION:

PAL-Cut 1200 was specially adapted by our engineers with extra height and an extended table.

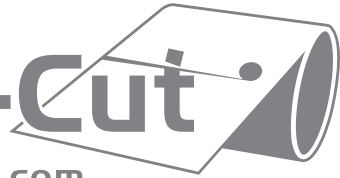
We achieved a total saving of:

40%

– with **PAL-Cut**® ...

PAL-Cut

www.palcut.com



Customer: Henkel Ltd. (UK)
Business sector: Adhesive products
Model: PAL-Cut 1200



PROBLEM:

Humidity in pallets.



SOLUTION:

2 x PAL Cut 1200 were specially adapted.
The machines supply two pallet lines with base sheets on the pallets before they are palletted.



Customer: Kellogg's (UK)
Business sector: Food products
Model: PAL-Cut 1200



PROBLEM:

Lost sheets and shutdowns.



SOLUTION:

PAL-Cut 1200 was specially adapted by our engineers with extra height and an extended table.

We achieved a total saving of:

32%

– with PAL-Cut® ...



Customer: Silverspoon (UK)
Business sector: Food products
Model: PAL-Cut 1200



PROBLEM:

Unstable pallets.



SOLUTION:

A PAL-Cut 1200 was installed. The non-slip paper Antim65 is used to stabilise the goods.



Customer: Kraft Foods, Halle (BE)
Business sector: Food products
Model: PAL-Cut 800



PROBLEM:

Unstable pallets.



SOLUTION:

PAL-Cut with extended table was installed. The non-slip paper Antim65 is used to stabilise the goods.



Customer: Aller Press, Taastrup (DK)
Business sector: Bookbinding
Model: PAL-Cut 1200



PROBLEM:

The customer had problems with the loss of sheets.



SOLUTION:

A standard PAL-Cut 1200 was installed by our engineers.
After the PAL-Cut had been installed in the palleting line, they went over to 180 gsm Linerboard instead of the former 400 gsm.

We achieved a total saving of

55%

– with PAL-Cut®...



Customer: Chr. Hendriksen, Skive (DK)
Business sector: Bookbinding
Model: PAL-Cut 1200



PROBLEM:

The customer had problems with shutdowns due to the loss of sheets.
Used 300 gsm sheets.



SOLUTION:

PAL-Cut 1200 installed by own engineer with 150 gsm linerboard.
No more operational shutdowns.

We achieved a total saving of

65%

– with **PAL-Cut**®...



Customer: Chr. Hendriksen, Skive (DK)
Business sector: Bookbinding
Model: PAL-Cut 1200



PROBLEM:

Speed limitation in existing system.



SOLUTION:

A PAL-Cut 1200 was customised together with a Palomat solution.
The machine applies base sheets on pallets before they are palletted.



Customer: Egmont, Glostrup (DK)
Business sector: Bookbinding
Model: PAL-Cut 1200



PROBLEM:

The customer had problems with the robot taking several sheets at a time as well as loss of sheets.



SOLUTION:

PAL-Cut 1200 was installed in the existing palleting system by own engineer.
Linerboard 150 gsm.

We achieved a total saving of

40%

– with **PAL-Cut**®...



Customer: Palsgaard, Juelsminde (DK)
Business sector: Food products
Model: PAL-Cut 1200



PROBLEM:

The company's production was expanding, so capacity had to be extended.



SOLUTION:

2 new palleting units were set up in collaboration with the machine supplier.
150 gsm Antim 65.



Customer: Arla Foods, Rødkærsbro (DK)
Business sector: Cheese
Model: PAL-Cut 1200



PROBLEM:

The company's production was expanding, so capacity had to be extended.



SOLUTION:

New system comprising 1 PAL-Cut 1200, which operates 2 robots.
Installed in collaboration with robot supplier.
150 gsm Antim 65.

PAL-Cut

www.palcut.com



Customer: Graphx, Odense (DK)

Business sector: Bookbinding

Model: PAL-Cut 1200



PROBLEM:

The customer had problems with the loss of sheets.



SOLUTION:

4 PAL-Cut 1200 were adapted to suit the existing unit by our engineers. After the PAL-Cut had been installed in the palleting line, they went over to 150 gsm Linerboard instead of the former 300 gsm.

We achieved a total saving of

65%

– with PAL-Cut®...



Customer: Elopak, Lystrup (DK)
Business sector: Packaging
Model: PAL-Cut 1200
(with special loading arm for feeding cards)



PROBLEM:

The customer's existing robot could not keep up. Antim 65 was to be placed on the base of the pallets.



SOLUTION:

PAL-Cut 1200 was supplied with a special loading arm, which takes off the sheet before it goes to palleting. Set up by own engineer.
150 gsm Antim 65.

We achieved a total saving of

65%

– with **PAL-Cut**®...

PAL-Cut

www.palcut.com



Customer: Arla Foods, Holstebro (DK)
Business sector: Food products
Model: PAL-Cut 1200



PROBLEM:

The customer had problems with the loss of sheets and double sheets.



SOLUTION:

3 PAL-Cut 1200 were specially adapted by our engineers.

We achieved a total saving of

17%

– with **PAL-Cut**®...



Customer: Bodilsen, Nyk. Mors (DK)
Business sector: Furniture Industry
Model: PAL-Cut 1200
(with special layout arm for feeding cardboards)



PROBLEM:

Speed limitation in existing system.



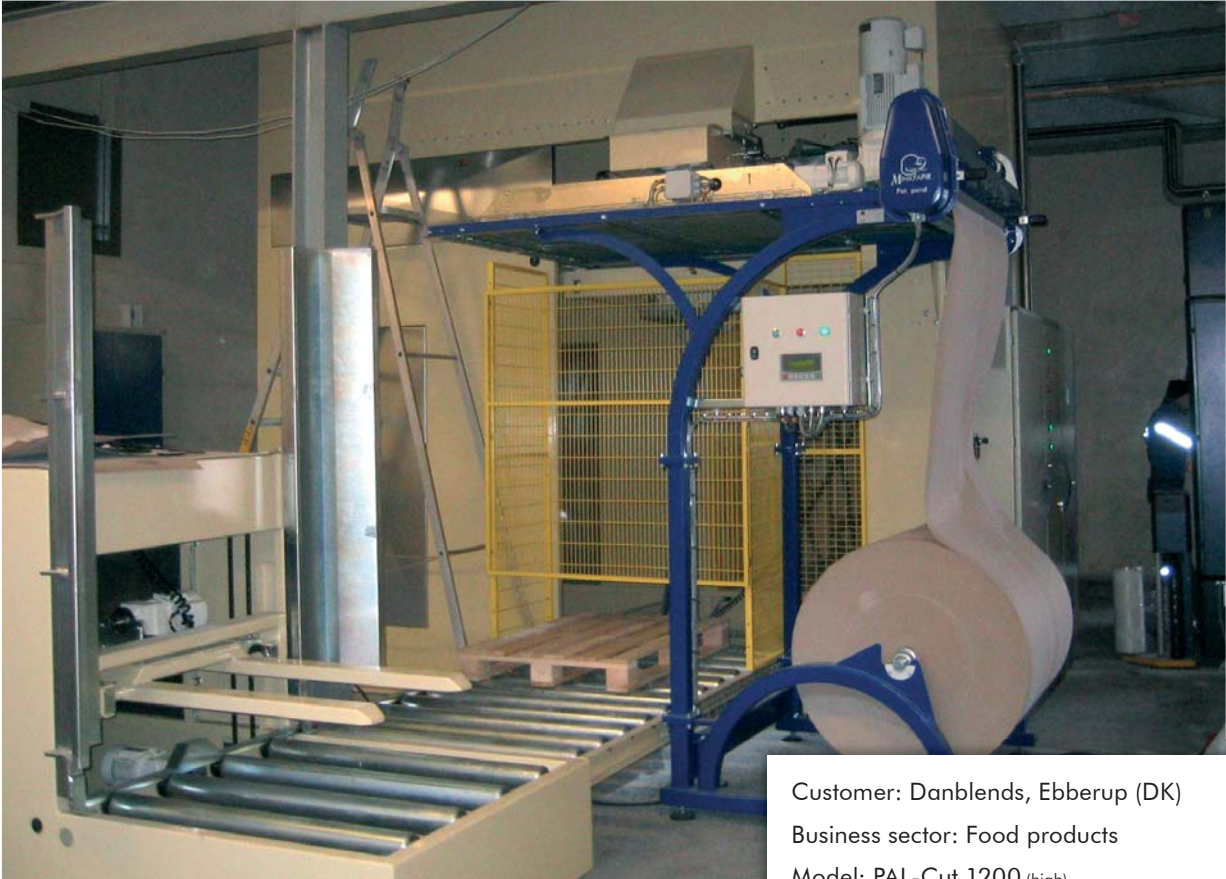
SOLUTION:

PAL-Cut 1200 with special loading arm for base card installed by own engineer together with existing palleting unit.
Antim 65 150 gsm.

We achieved a total saving of

45%

– with **PAL-Cut**®...



Customer: Danblends, Ebberup (DK)
Business sector: Food products
Model: PAL-Cut 1200 (high)



SOLUTION:

A PAL-Cut 1200 with extra height was installed together with a new unit by the machine supplier.
Antim 65 150 gsm.



Customer: Palsgaard, Juelsminde (DK)

Business sector: Food products

Model: PAL-Cut 1200 (Specially designed with the paper roll based on a carriage)



PROBLEM:

The customer had problems with the robot taking several sheets at a time as well as loss of sheets.



SOLUTION:

A PAL-Cut 1200 was specially adapted so that the cutter head and table could be installed in the customer's existing sheet loader. The roll was fitted on a separate carriage. 150 gsm Antim 65.

We achieved a total saving of

55%

– with PAL-Cut®...



Customer: Franzen, Aalborg (DK)
Business sector: Bookbinding
Model: PAL-Cut 1200 (with special underframe
and extra height)



PROBLEM:

The customer had problems with pallet stabilisation.



SOLUTION:

2 PAL-Cut 1200 were adapted by our engineers. Linerboard and Antim 65 in 150 gsm were then inserted as intermediate sheets.

We achieved a total saving of

35%

– with PAL-Cut®...



Customer: Hill's Pet Nutrition (NL)

Business sector: Pet food

Model: PAL-Cut 1200 (Specially designed with partly galvanized underframe)



PROBLEM:

Too slow. Lost sheets/took several sheets at a time.



SOLUTION:

PAL-Cut 1200 installed.

Then stopped losing sheets, no duplicate sheets and no operational shutdowns.

We achieved a total saving of

35%

– with PAL-Cut®...



Customer: Schulstad, Holstebro (DK)

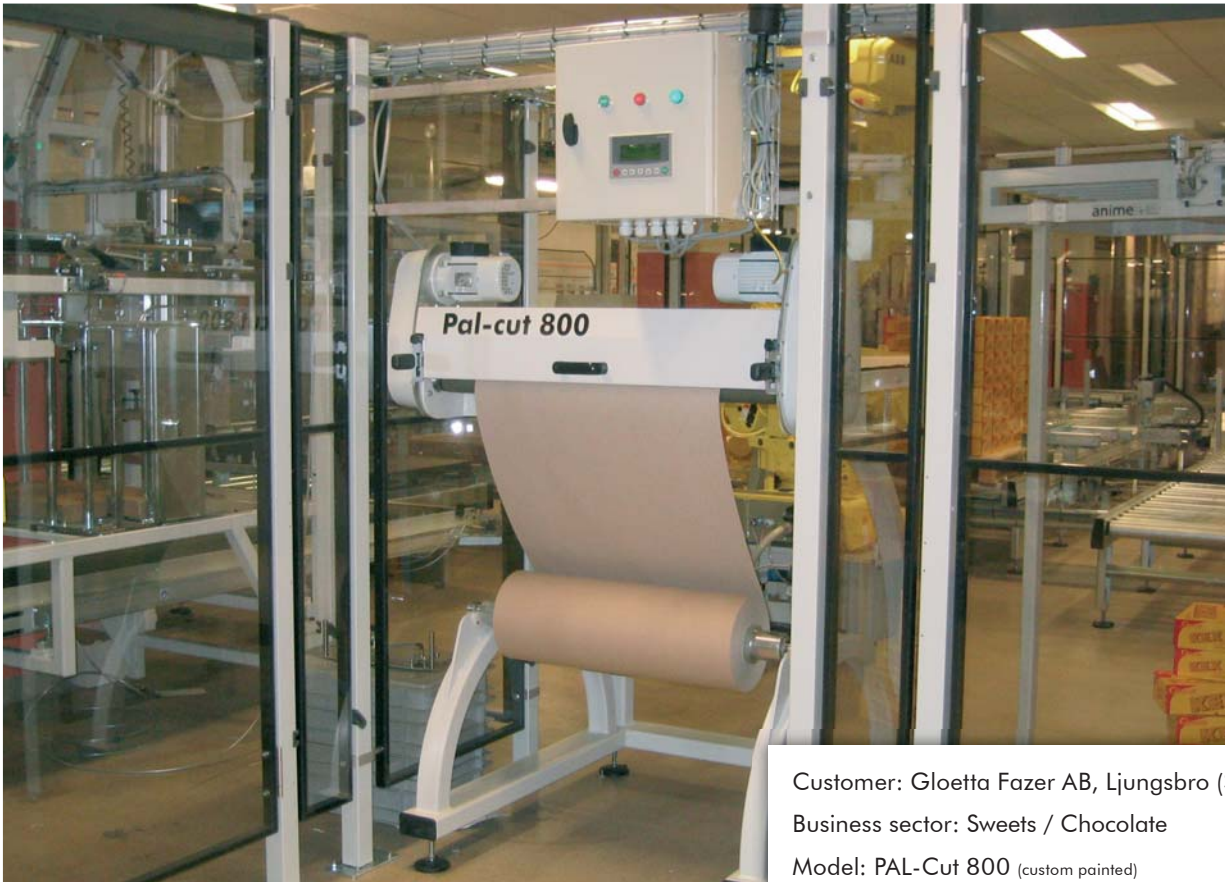
Business sector: Bread

Model: PAL-Cut 1200 (with special galvanized underframe)



SOLUTION:

2 PAL-Cut 1200 were set up in collaboration with the robot supplier.
Linerboard 150 gsm.



Customer: Gloetta Fazer AB, Ljungsbro (S)
Business sector: Sweets / Chocolate
Model: PAL-Cut 800 (custom painted)



SOLUTION:

PAL-Cut 800 was set up in collaboration with the robot supplier.
Antim 65 150 gsm.



Customer: Chr. Hendriksen, Skive (DK)
Business sector: Bookbinding
Model: PAL-Cut 800 (Specially made with extra height and tape length)



PROBLEM:

The customer experienced problems with the loss of sheets in 300 gsm.



SOLUTION:

2 PAL-Cut 800 were specially adapted by our engineers with extra height and an extended table. After the PAL-Cut had been installed in the palleting line, they went over to 150 gsm Linerboard instead of the former 300 gsm.

We achieved a total saving of

50%

– with PAL-Cut®...



Customer: Gern Poultry, Gedved (DK)

Business sector: Abattoir, Chicken

Model: PAL-Cut 800 (Specially designed for feeding box coverings. Roll pre-printed)



PROBLEM:

Handling of sheets of corrugated cardboard, and problems with storage space.



SOLUTION:

Customised PAL-Cut 800. After PAL-Cut was installed in the palleting line, they went over to pre-printed rolls in 150 gsm with a logo instead of previously preprinted sheets of corrugated cardboard that served as lids for the chicken boxes.

We achieved a total saving of

43%

– with **PAL-Cut**®...



Customer: Arla Foods, Bov (DK)
Business sector: Food products
Model: PAL-Cut 1200



PROBLEM:

Problems with internal transport in warehouse boxes.



SOLUTION:

A new ABB robot was installed together with a PAL-Cut 800 and the problems were solved.
Installed in collaboration with SCA.



Customer: Rose Poultry, Skovsgaard (DK)
Business sector: Abattoir, Chicken
Model: PAL-Cut 800 (with special galvanized underframe)



PROBLEM:

The customer experienced problems with the loss of sheets in 300 gsm.



SOLUTION:

PAL-Cut 800 with special galvanised underframe installed and adapted by own engineers. After the PAL-Cut had been installed in the palleting line, they went over to 180 gsm Liner-board instead of the former 300 gsm.

We achieved a total saving of

50%

– with PAL-Cut®...



Customer: Franzen, Aalborg (DK)
Business sector: Book-binding
Model: PAL-Cut 1200



PROBLEM:

The customer had problems with pallet stabilisation.



SOLUTION:

PAL-Cut 1200 customised with roller installed in the ceiling because of inadequate space.

We achieved a total saving of

50%

– with PAL-Cut®...



Customer: Arla Foods (DK)
Business sector: Food products
Model: PAL-Cut 1200



SOLUTION:

PAL-Cut 1200 with specially fitted dividing knife for $\frac{1}{2}$ + $\frac{1}{4}$ pallet.

PAL-Cut

www.palcut.com



Customer: Nordisk Detergent, Hobro (DK)

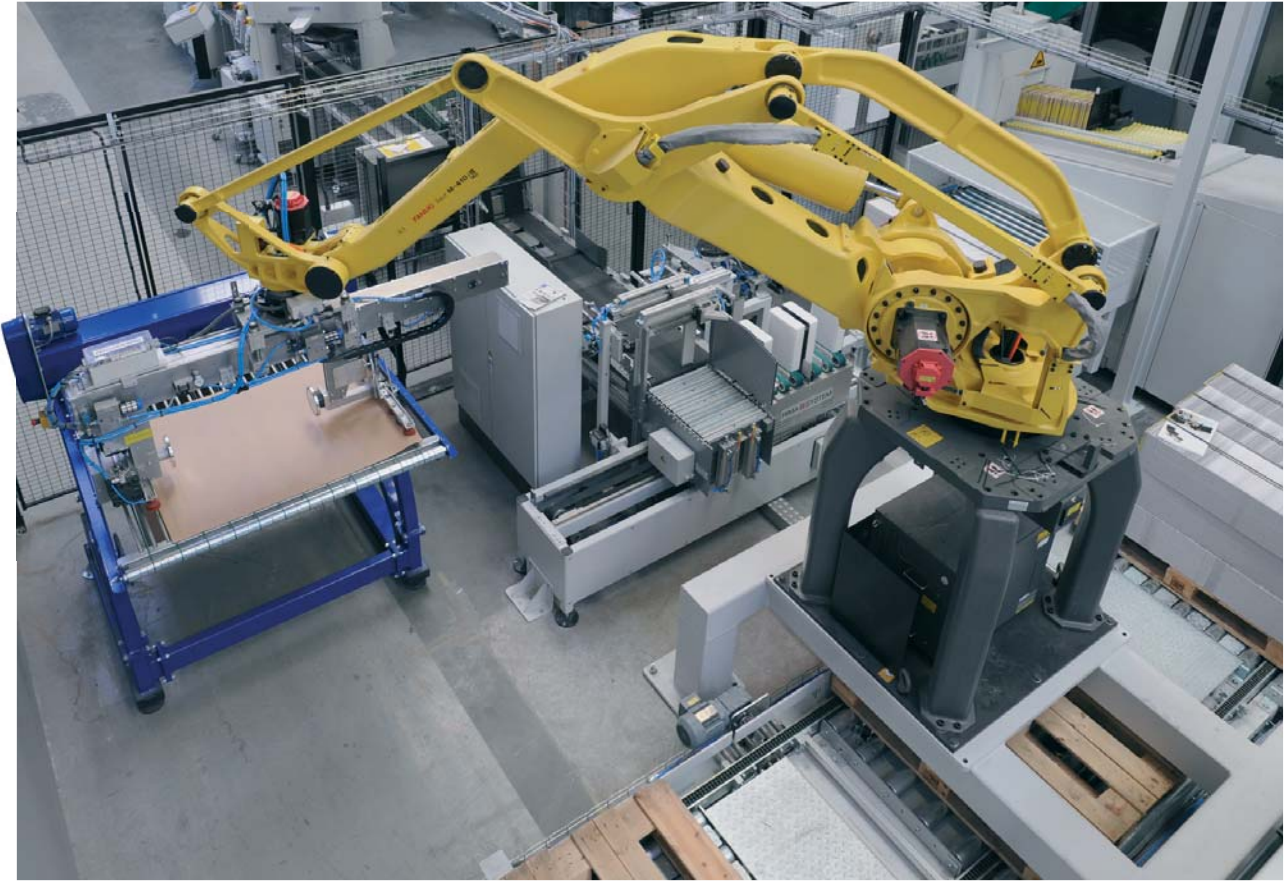
Business sector: Soap (detergent)

Model: PAL-Cut 800 (with removable knife across)

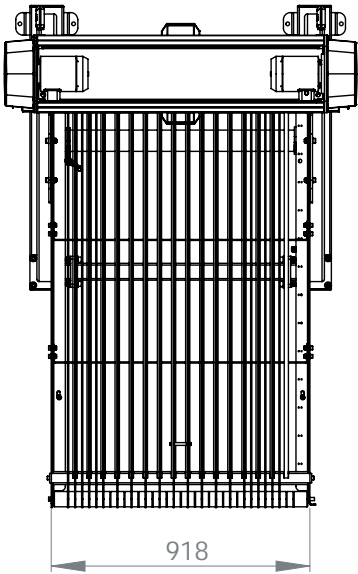
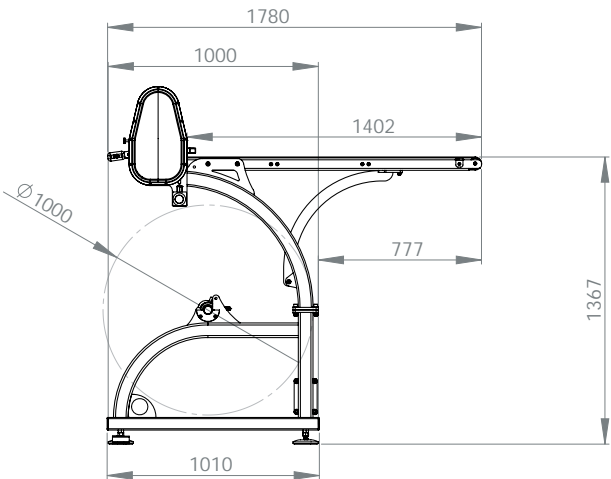
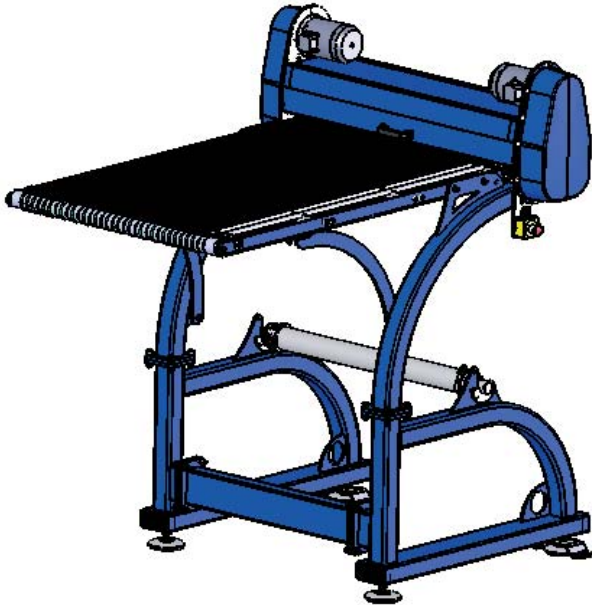
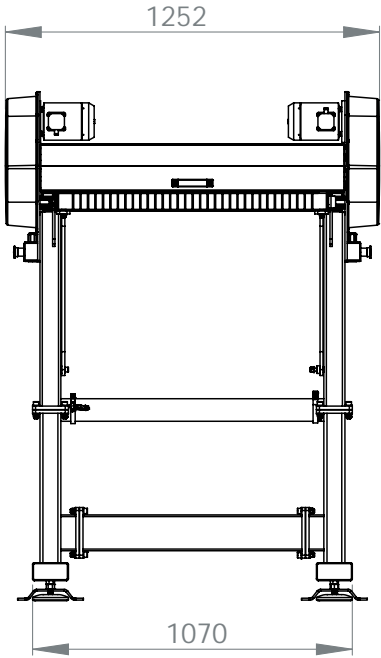


SOLUTION:

3 new palleting units set up in collaboration with the robot supplier. All installed with PAL-Cut 800 with specially fitted dividing knife for 1/4 pallet.
150 gsm Antim 65.



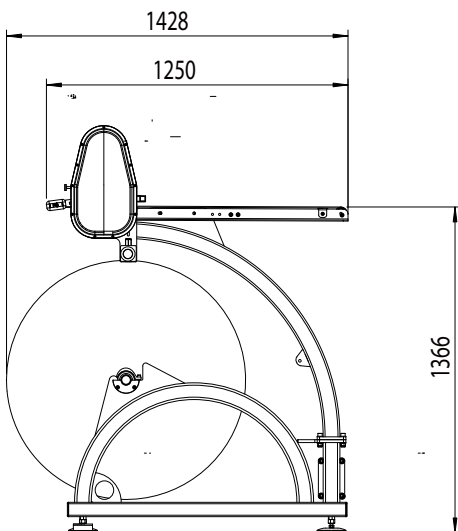
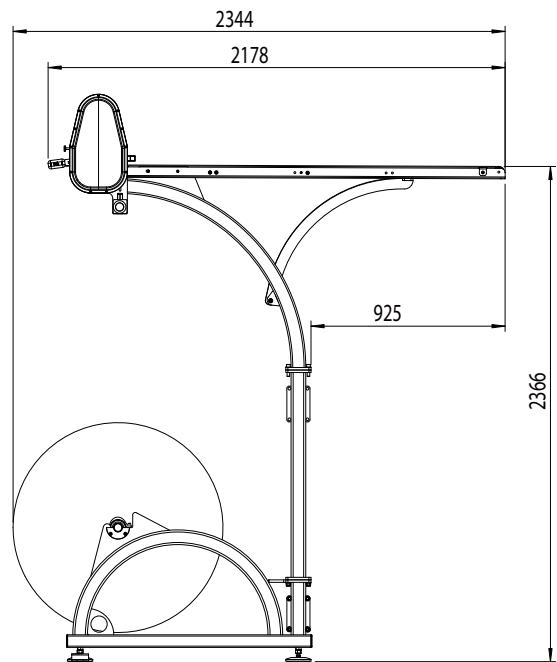
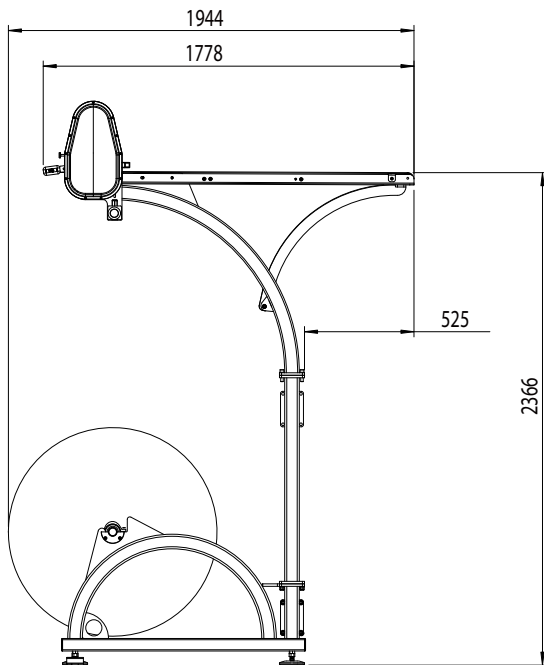
Machine dimensions



SUPPLEMENTARY DIMENSIONS
 Model 1200 + 400mm (width)

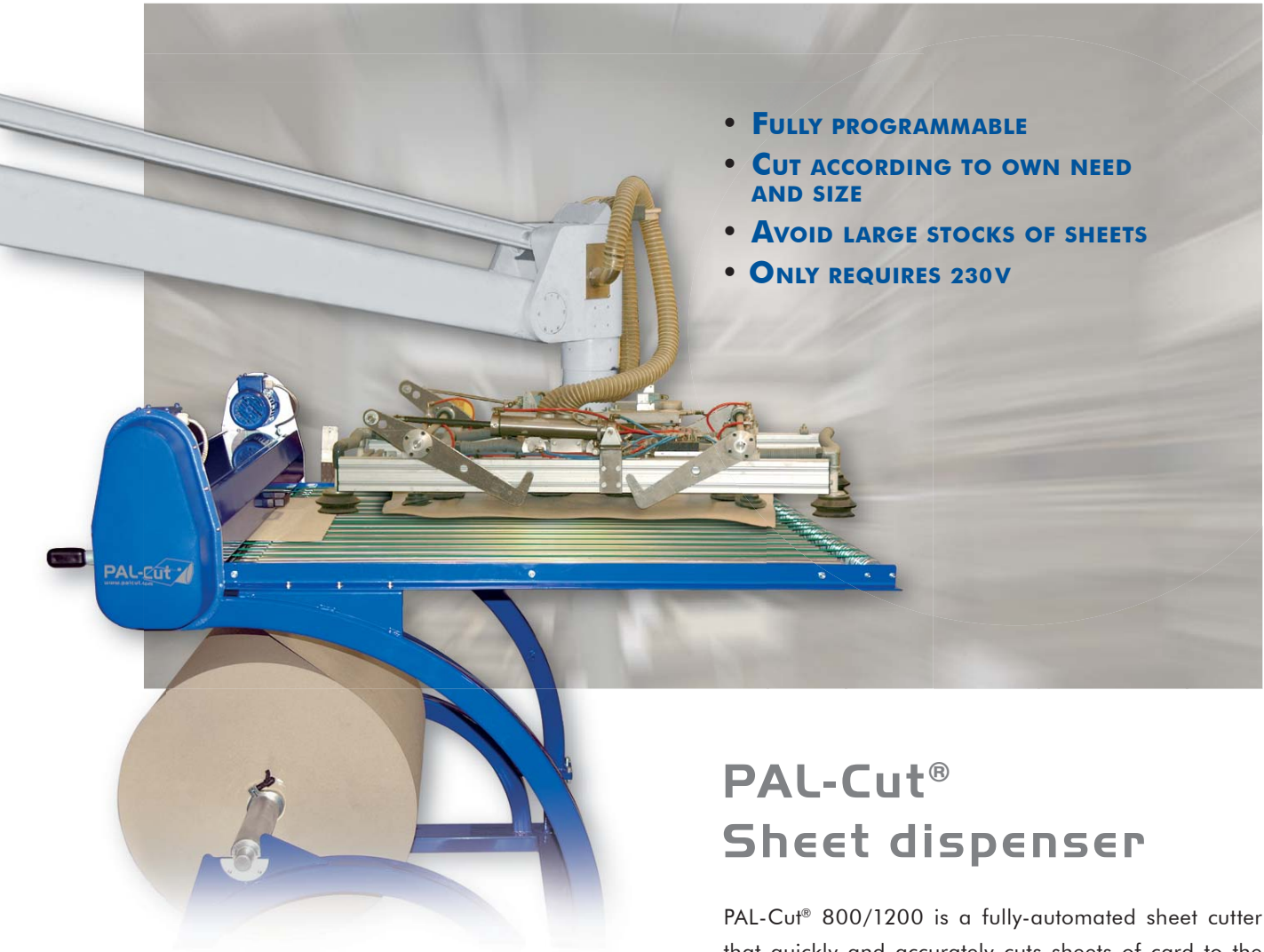


Example machines



DIE ABBILDUNGEN OBEN SIND NUR AUFBAUBEISPIELE.
DIE MASCHINEN KÖNNEN AN DIE WÜNSCHE UND BEDÜRFNISSE DES KUNDEN
ANGEPASST WERDEN.





- **FULLY PROGRAMMABLE**
- **CUT ACCORDING TO OWN NEED AND SIZE**
- **AVOID LARGE STOCKS OF SHEETS**
- **ONLY REQUIRES 230V**

PAL-Cut® Sheet dispenser

PAL-Cut® 800/1200 is a fully-automated sheet cutter that quickly and accurately cuts sheets of card to the desired length.

The sheet cutter can be used in industrial companies with high sheet consumption rates where automatic palleting units have to run continuously. Recycled card and cardboard are cut directly from the roll.





PAL-Cut

PAL-Cut A/S | Borbjerg | DK-7500 Holstebro
Tel. +45 9613 3110 | info@palcut.com | www.palcut.com